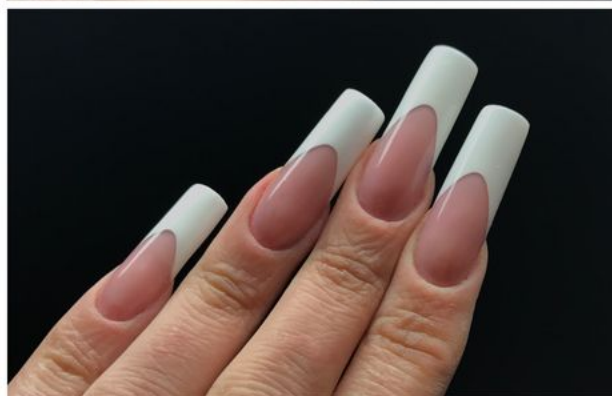


„ Estonian Global Nail Cup 2018“



Category Gel and Powder/Liqued

(Competition is open for all countries)



Date:

13 th of October 2018

Place:

Convention centre of Tallinn

Pirita street 28

10127 Tallinn, Estonia

Beauty Factory OÜ

Registrikood, 12563240

Company

Narva mnt 7-25, Tallinn,

Harjumaa, 10117,

Mob: +372 58 0000 50

E - mail: info[at]beautyfactory.ee

www.beautyfactory.ee

OpenMon - Fri
9.00 - 17.00Sat-Sun.
Closed

Sequence plan

(conditions and assessment of competition)

09:00 – 09:15	am REGISTRATION OF PARTICIPANTS
09:15 – 09:30	WELCOME/ EXPLANATIONS
09:30	START OF THE COMPETITION
12:00	END OF THE COMPETITION
12:00 - 14:30	pm JURY ASSESSMENT
14:30 - 15:00	POINTS CALCULATION
17:00	AWARD CEREMONY (D-hall)

09.00 – 09.15 am REGISTRATION OF PARTICIPANTS (A1-hall)

- Please present at registration:
- Passport or identification card
- Model

SETTING UP WORK PLACES at the competition room in hall A1.

All work places have three electricity sockets; the participants must provide their own working utensils, model, rubbish plastic bag, working materials, lamp, LED-UV lamp and lamp holder.

Attention: Those who are not in the competition room in hall A1 to register by 9.15 a.m. will not be able to take part in the competition- late arrivals will be disqualified!

09.15 – 09.30 a.m. WELCOME/ EXPLANATIONS

- Greeting of participants, explanation of assessment criteria and sequence plan. Question & answer session.
- Previous to the competition there will be done nailchek to all of the models. Judges will mark all white spots on the nailplate, nail traumas and eponychiums.
- Other nail injuries will not be marked on the nailchek paper.
- It is allowed to plain manicure to competitor model previous the competition.

9.30 a.m. START OF THE COMPETITION

- In the 2½ hours allotted, the nails on both hands must be created with white extensions with perfect smile-lines on all ten nails. Nailbed coverage with colorfading towards the cuticle line is a must. One hand needs to be polished with the provided nail polish (either left or right).
- The minimum length of the white extension should be 50% the length of the nail bed from cuticle to the deepest point of the smile line.
- The white extension can be 50% of the length of the bed from cuticle to the deepest point of the smile line. The length will be considered by the judges in the degree of difficulty (longer and consistent being more difficult).
- The shape of the nails must be a perfect square on all ten nails.
- The concave curve must match the convex curve. Both curves must have the same symmetrical and consistent curvation (depth 30-50%).

PS! The contestant must use the camouflage gel/acrylic only on nailplate 2-nd zone. The nail bed coverage should be free of shadows and with perfect color fading to the cuticle. There can not be any empty space between the smile line and the camouflage gel/acrylic. The camouflage gel/acrylic can not cross the smile line The underside of the nailplate must only show the possible nailbed elongation, the rest of the free edge needs to be fully white.

- One hand must be painted with red nail polish. (Either right or left hand). Other hand will remain unpolished.
- Nail polish will be handed out by the competition organizers.
- It is not allowed to use your own nail polish and nail polish brush!
- The nail polish can not fall under the free edge.
- Extra attention must be payed to the correct polished nail side lines.
- The space between the nail polsih and the cuticle area can be max. 1 mm. The

space will be considered by the judges in the degree of difficulty (less free space and consistent being more difficult).

- The un-polished hands top gloss gel must be clear, glitter free and with hy-gloss.
- In the powder liquid system it is not allowed to use top gloss gel, the surfas must be buffed to hy-gloss.
- Different base-, top nail polishes, speed dry, losions and oils are allowed.
- During the competition at least two qualified supervisors will remain in the room to make shure that all contestants are following the competition rules.
- The supervisors will check during working time if the nails on both hands receive perfect smile-lines, the judges may want to check as well and have the right to remove the nail polish on the polished hand if in doubt.
- In this competition it is allowed to use both tips and shablones.
- Allowed are only clear and natural colored tips.
- Tips can not be prepared before the competition.
- The forms can not be cuted before the competition.
- The supervisors are right to remove contestant from the competition in case of any kind of rule breaking.
- Mehanical nail files is allowed!
- Smoking during the competition is not allowed!
- The model for competition can not be your contestants teacher/tutor!
- Any acsess talking with the model is not allowed!
- All mobiles must be swiched off or on vibrate during the competition and alsou during the evaluation.
- The spectators can observe the competition from the stricted area, talking to the contestants is not allowed.
- The start and the end of the competition will be told by the supervisor.
- During the competition all contestant must maintain order on the work area.

12.00 p.m. END OF THE COMPETITION

- At the end of the competition the competitors stop work immediately and stand up at their workstations together with their models.
- All contestants must finish their work at 12.00 or earlier, but not later than 12:00.
- All models will have their own starting numbers.
- Models can not have anything else in their hand than nailchek.
- The models are not allowed to leave the competition arena until the assessment is completed. If they do so they will be disqualified.
- If the model needs to leave to the toilet, then only with the supervisor.
- In case of any rule braceing the contestant may be disqualified.

12.00– 14.30 p.m. JURY ASSESSMENT

- During judging no jewellery (watches, rings, bracelets etc.) may be worn by the models on hands and underarms. There can not be alsou any tattoos, scars or injuries on the models hands.

1st short assessment

- All models will slide their hands with the number board in the correct numerical order under the curtain.
- This will provide the jury with an overview of the quality of the work.

2nd detailed assessment

- The models will now be assessed individually by the judges and points awarded.
- The models will be judged by 5 international judges. Each judge will judge all 11 criteria points on all models.
- 10 points are allotted for each section, with 0 indicating „very poor“ and 10 „perfect“.
- After the assessment the jury will be given the opportunity of re-assessing individual models again if necessary.
- The models may leave the competition arena only when all jury members have seen all models and the jury does not wish to see any model a second time.

14.30 – 15.00 p.m. POINTS CALCULATION

17.00 p.m. AWARD CEREMONY

- The award ceremony will take place in hall D.
- The assessment sheets will be handed out after the award ceremony.
- All contestants will see the results of the nail competition „Estonias global Nail Cup 2018“ after a week on homepage www.beautyfactory.ee
- The judges decision is final.
-
- The contestants acknowledge the conditions of participation on application. Through registration the participant accepts that all photos taken during competition maybe used with their concession by the Messe Tallinn.
-

Convention centre of Tallinn and Beauty Factory team would like to wish you every success and hope that you enjoy the competition!

Assessment criteria

Goal: The resulting nail enhancement should be created like a perfect salon nail.

Maximum points for each criteria

Shape	<ul style="list-style-type: none">➤ The chosen shape must be consistent on all nails according to the rules. The shape chosen must be a technical correct one.	10 points
--------------	--	------------------

Length	<ul style="list-style-type: none"> ➤ The length must be even and consistent. The middle finger and thumb should be the same length. The index finger and ring finger should be 2mm shorter and the small finger 2mm shorter than the ring and index finger. The maximum length of the competition nail should be 1 to 1 or the white extension should be the same length as the nail bed from cuticle to the deepest point of the smile line. The minimum length of the white extension should be 50% the length of the nail bed from cuticle to the deepest point of the smile line. The length will be considered by the judges in the degree of difficulty (longer and consistent being more difficult). 	10 points
Sidelines	<ul style="list-style-type: none"> ➤ The sidelines of the enhancement align perfectly with the natural nail plate. They must not be wider than the nail bed or cut in. From the front view the sidelines need to be parallel. The thickness of the sidelines should not be more than business card thick. 	10 points
Stress point	<ul style="list-style-type: none"> ➤ The stress point (apex) must be sculpted at the same, correct point as seen from the front and the profile with a consistent thickness. 	10 points
Concave & convex	<ul style="list-style-type: none"> ➤ The concave curve must match the convex curve. Both curves must have the same symmetrical and consistent curvation (depth 30-50%). The top surface is smooth and perfectly contoured. 	10 points
Extension free edge	<ul style="list-style-type: none"> ➤ The free edge of the extension must be consistent on all nails. The thickness must not be more than business card thick all around the free edge. 	10 points
Cuticle Area	<ul style="list-style-type: none"> ➤ The product has been applied flush to the nail plate and close to the cuticle. The nail bed and cuticle is not injured in any way. 	10 points

Smile - Lines + nail bed elongation	<ul style="list-style-type: none"> ➤ The white sculpted extension must be symmetrical (depth 30-50%) and consistent on both hands. The smile lines are sharp on all nails, without „ghost shadows“. ➤ The nail bed coverage should be free of shadows and with perfect color fading to the cuticle. The underside of the nailplate must only show the possible nailbed elongation, the rest of the free edge needs to be fully white. 	10 points = 5+5
Nail polish + Surface	<ul style="list-style-type: none"> ➤ The nail polish must be applied consistent with the same shape and free margin at the nail bed on all nails of one hand. ➤ The surface of the unpolished nails on the other hand must be without any scratches, dull spots or unevenness. The applied product must have a high shine all around. ➤ The nail polish can not fall under the free edge. ➤ The space between the nail polish and the cuticle area can be max. 1 mm. The space will be considered by the judges in the degree of difficulty (less free space and consistent being more difficult). ➤ The space must be consistent on all polished nails. ➤ In Gel system the un-polished hand top gloss gel must be clear, glitter free und with hy-gloss. ➤ In the powder liquid system it is not allowed to use top gloss gel, the surfas must be buffed to hy-gloss. ➤ Different base-, top nail polishes, speed dry, losions and oils are allowed. ➤ In gel system the top gloss gel must be covering consistently trough all five un polished nails. 	10 points = 5+5
Form/+ product residue	<ul style="list-style-type: none"> ➤ Form must fit to the natural nails free edge axactly and the line between the two should not be visible. ➤ All residues, such as dust, oil, nail enamel and adhesive must be removed from beneath the nail. 	10 points = 5+5
Overall impressioon	<ul style="list-style-type: none"> ➤ Product controll (air bubbles, marbelizing etc.) Are there injuries to cuticle area or nailplate? Does the chosen shape and length suit the hand? Is the nail colouring in keeping with the hand colouring? Is it a perfect set of technical 	10 points

	perfect and durable salon nails?	
--	----------------------------------	--

NB! The jury judges solely according to the above criteria.

The prize giving ceremony will take place in Hall D 13 October 2018 at 17:00

We wish to all participants good luck!

**Beauty Factory team!
Convention centre of Tallinn!
"Ilu sõnum 2018"**